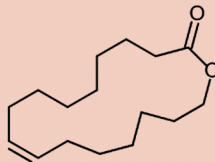


Scentolide

Ref Synarome : **085705**

CAS Number : 28645-51-4 FEMA : 4145



TECHNICAL DATA

Appearance : pale yellow liquid

Flash point : > 110°C

Vapor pressure (20°C) : 1.11x10⁻⁵ mmHg

Chemical name : Cis-Iso Ambrettolide

Chemical Formula : C₁₆H₂₈O₂

Molecular weight : 252.4

Log P : 5.37

GC purity : Cis isomer > 93%

SUBSTANTIVITY

Tenacity on blotter : 1 month

STABILITY

VERY GOOD ★★ ★

- Fine fragrance
- Shampoo / Shower gel
- Cream
- Candle
- Incense

GOOD ★★ ★

- Soap
- Detergent

MODERATE ★★ ★

- Fabric softener
- Bleach

REGULATORY



BIODEGRADABILITY



RENEWABLE CARBON



OLFACTIVE PROFILE

●● Olfactive family

Musky

👉 Odor description

A very elegant and diffusive musk with blackberry and red berry undertones.

📊 Suggested Usage

0.1 to 2%

+ Impact

It's an intensive and radiant note which gives freshness and roundness to a composition.

★ Great combinations

It blends well in all fruits, flowers (peony, roses, orchids) and in fougères, musks, leather, patchouli and chypre fragrances.

♥ Why we love it

Its impact is stronger than ambrettolide's one.

CITRUS



ALDEHYDIC



AROMATIC



GREEN



MARIN



FLORAL



FRUITY



SPICY



BALSAMIC



WOODY



AMBERY



MUSKY



LEATHERY



ANIMAL

