

# Ethyl Cresoxyacetate

Ref Synarome : **085110**

CAS Number : 67028-40-4 FEMA : 3157

## TECHNICAL DATA

**Appearance** : colorless liquid

**Flash point** : > 100°C

**Vapor pressure (20°C)** : 0.00361 mmHg

**Chemical name** : Ethyl (4-methylphenoxy) acetate or Cherry oxyacetate

**Chemical Formula** :  $C_{11}H_{14}O_3$

**Molecular weight** : 194.2

**Log P** : 2.65

**GC purity** : > 98%, contains 0.19% of para-cresol

## SUBSTANTIVITY

**Tenacity on blotter** : 1 day

## STABILITY

**VERY GOOD** ★★ ★

- Fine fragrance
- Candle
- Incense

**GOOD** ★★ ★

- Cream
- Fabric softener

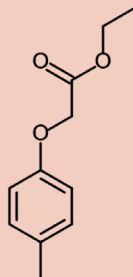
**MODERATE** ★★ ★

- Shampoo / Shower gel
- Detergent

REGULATORY



NO LIMITATION IFRA  
ALLERGEN &  
CMR FREE



## OLFACTIVE PROFILE

**Olfactive family**

Fruity

**Odor description**

A complex note with various facets: slightly fruity with cherry nuances together with animalic, metallic and powdery undertones.

**Suggested Usage**

Up to 2%

**Impact**

It brings a duality between fruity and animalic notes.

**Great combinations**

It works well in fruity notes, chocolate and tobacco fragrances.

**Why we love it**

It has the fruity animalic aspect of an Indonesian chocolate.

**CITRUS**



**ALDEHYDIC**



**AROMATIC**



**GREEN**



**MARIN**



**FLORAL**



**FRUITY**



**SPICY**



**BALSAMIC**



**WOODY**



**AMBERY**



**MUSKY**



**LEATHERY**



**ANIMAL**

