

Ambrarome

Ref Synarome : 102869

TECHNICAL DATA

Appearance : green reddish brown to dark paste

Flash point : > 110°C

SUBSTANTIVITY

Tenacity on blotter : 1 month

Wet fabric : good

Dry fabric : good

Iron fabric : moderate

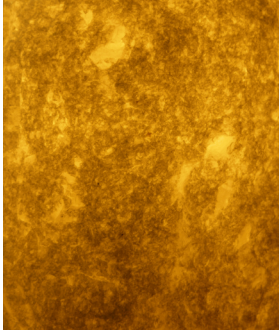
STABILITY

VERY GOOD ★★★

- Fine fragrance
- Shampoo / Shower gel
- Soap
- Detergent
- Bleach
- Candle
- Incense

GOOD ★★★

- Cream
- Fabric softener



OLFACTIVE PROFILE

●● Olfactive family

Animalic

↳ Odor description

A warm and powerful ambre gris like note with marine, mineral, balsamic and animalic facets.

% Suggested Usage

Trace to 2%

+ Impact

It gives a juicy aspect to red and exotic fruits. It has a high power making it usable as an extraordinary fixative in all kinds of products.

★ Great combinations

Works very well in ambery-oriental and chypre notes.

♥ Why we love it

A legendary note used in worldwide best sellers extracted from a natural raw material and developed without the use of animals.

CITRUS



ALDEHYDIC



AROMATIC



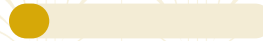
GREEN



MARIN



FLORAL



FRUITY



SPICY



BALSAMIC



WOODY



AMBERY



MUSKY



LEATHERY



ANIMAL

