

# Algenone pb sp

Ref Synarome : 100009

## TECHNICAL DATA

**Appearance** : colorless to pale yellow liquid

**Flash point** : > 110°C

## SUBSTANTIVITY

**Tenacity on blotter** : 1 month

**Wet fabric** : good

**Dry fabric** : good

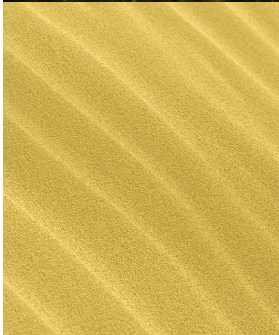
## STABILITY

**VERY GOOD** ★★★

- Fine fragrance
- Shampoo / Shower gel
- Cream
- Candle
- Incense

**GOOD** ★★★

- Detergent
- Fabric softener
- Bleach



## OLFACTIVE PROFILE

### ●● Olfactive family

Ozonic marine

### 👉 Odor description

The composition begins with a delicate rosy accent surrounded by a marine cascade of lily symphony. The background is reminiscent of sand and shells.

### % Suggested Usage

Up to 4%

### + Impact

It gives a natural aqueous facet to compositions and increases the green facet of jasmine, gardenia, narcissus or lily of the valley perfumes.

### ★ Great combinations

It blends well with chypre notes to induce modernity.

### ♥ Why we love it

It is the first marine note developed at the beginning of 50's.

CITRUS



ALDEHYDIC



AROMATIC



GREEN



MARIN



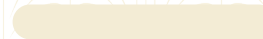
FLORAL



FRUITY



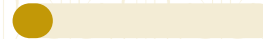
SPICY



BALSAMIC



WOODY



AMBERY



MUSKY



LEATHERY



ANIMAL

